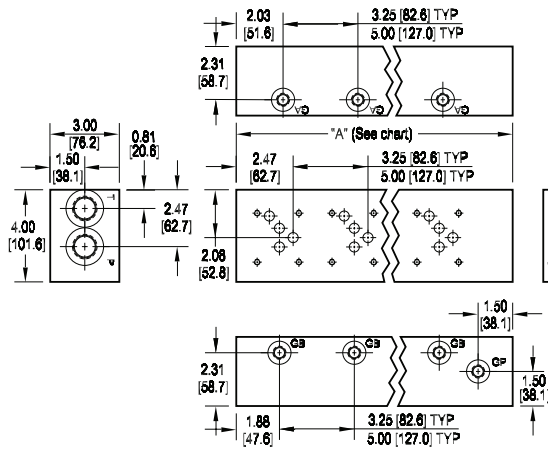
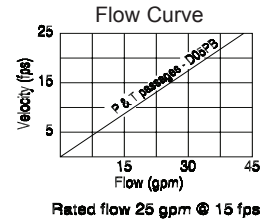
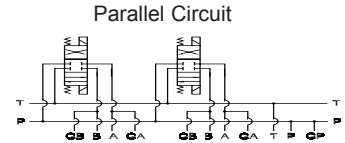
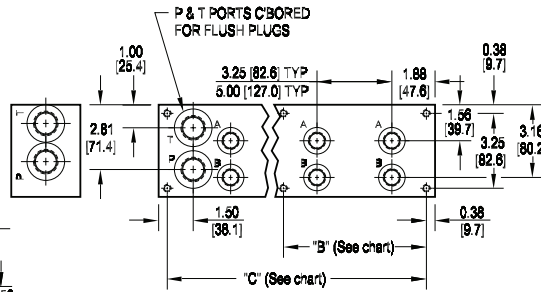


# D05 Standard Flow Bottom Ported Manifold



Mounting hardware is NOT supplied.



Port code	Valve mtg.	Manifold mtg.
P, S	0.25-20 UNC x 0.56 [14.3] DP	0.38-16 UNC x 0.69 [17.5] DP
B, M, T	M6 ISO 6H x 0.56 [14.3] DP	M10 ISO 6H x 0.69 [17.5] DP

No. of stations	01	02	03	04	05	06	07	08	09	10	No. of stations	02	03	04	05	06
"A" length (code 3 spa.) inch [mm]	5.00 [127.0]	8.25 [209.6]	11.50 [292.1]	14.75 [374.7]	18.00 [457.2]	21.25 [539.8]	24.50 [622.3]	27.75 [704.9]	31.00 [787.4]	34.25 [870.0]	"A" length (code 5 spa.) inch [mm]	10.00 [254.0]	15.00 [381.0]	20.00 [508.0]	25.00 [635.0]	30.00 [762.0]
"B" dim (code 3 spa.) inch [mm]	--	--	--	--	--	9.63 [244.5]	9.63 [244.5]	12.88 [327.0]	12.88 [327.0]	16.13 [409.6]	"B" dim (code 5 spa.) inch [mm]	--	--	9.00 [228.6]	14.00 [355.6]	14.00 [355.6]
"C" dim (code 3 spa.) inch [mm]	4.25 [108.0]	7.50 [190.5]	10.75 [273.1]	14.00 [355.6]	17.25 [438.2]	20.50 [520.7]	23.75 [603.3]	27.00 [685.8]	30.25 [768.4]	33.50 [850.9]	"C" dim (code 5 spa.) inch [mm]	9.25 [235.0]	14.25 [362.0]	19.25 [489.0]	24.25 [616.0]	29.25 [743.0]
apx. weight alum lb [kg]	6 [3]	10 [4]	14 [6]	18 [8]	22 [10]	26 [12]	29 [13]	33 [15]	37 [17]	41 [19]	apx. weight alum lb [kg]	12 [5]	18 [8]	24 [11]	30 [14]	36 [16]
apx. weight iron lb [kg]	16 [7]	26 [12]	36 [16]	46 [21]	56 [25]	66 [30]	76 [35]	87 [39]	97 [44]	107 [48]	apx. weight iron lb [kg]	31 [14]	47 [21]	62 [28]	78 [35]	94 [42]

Specifications, descriptions, and dimensional data are subject to correction or change without notice or incurring obligation. Download latest catalog page revisions at [www.daman.com](http://www.daman.com).

## Ordering Information

